

# **Install Instructions for the 2014 RT Aftermarket Exhaust and Cat-Bypass**

## **Tools required:**

- #10mm, #13mm and #15mm socket, ratched and wrench
- pliers or channel locks
- medium size long screw driver

## **Uninstall OEM muffler and Cat-Converter**

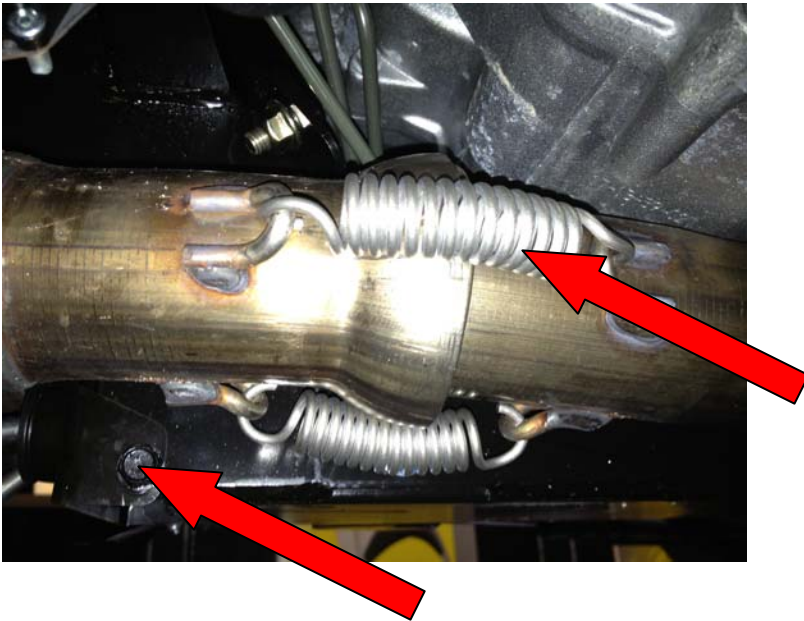
### **1 - Loosen clamp all the way**



### **2 - Loosen and take out bolt and nut underneath saddlebag take off OEM muffler**



**Loosen and take out 10 mm bolts at the frame holding the bottom bracket for Cat-Converter.**  
**With a pair of pliers or channel locks remove the 3 springs holding the cat converter in place**



**Loosen and take off the rubber holder located at the top of the Cat  
Take out the Cat-Converter**



**Leave the carbon gasket on the down pipe (header pipe).  
This will be the seal between down pipe and bypass  
Bracket with rubber grommets holding the front of Cat-Converter to  
the frame is not required for install of bypass**

**Install of the Cat-Bypass going to be in reverse order.**

**Mount rubber hanger and hang bypass in place,  
Then put the springs back on, may requires some force  
(has to be that way to provide a good seal between down pipe and  
bypass)**

**After that, you can install the OEM muffler or the aftermarket muffler.  
Line everything up correctly and fasten.**



**After install of Bypass and Muffler restart the engine and let idle and reff up a few times for about 5 minutes. Then shut off engine, take ignition key out and walk away from bike at least 10-20 feet and wait 5-10 minutes. This will reset the ECU/computer on the bike.  
Now you can start your bike, the computer will apply the new setting and you ready to go!**